

# Open Frame

Model Name **OF084-AUSN03**

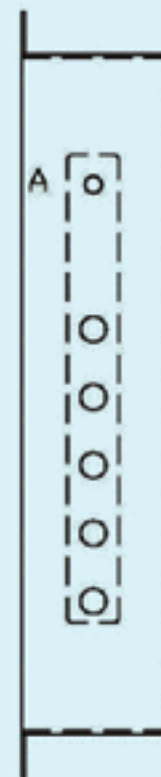
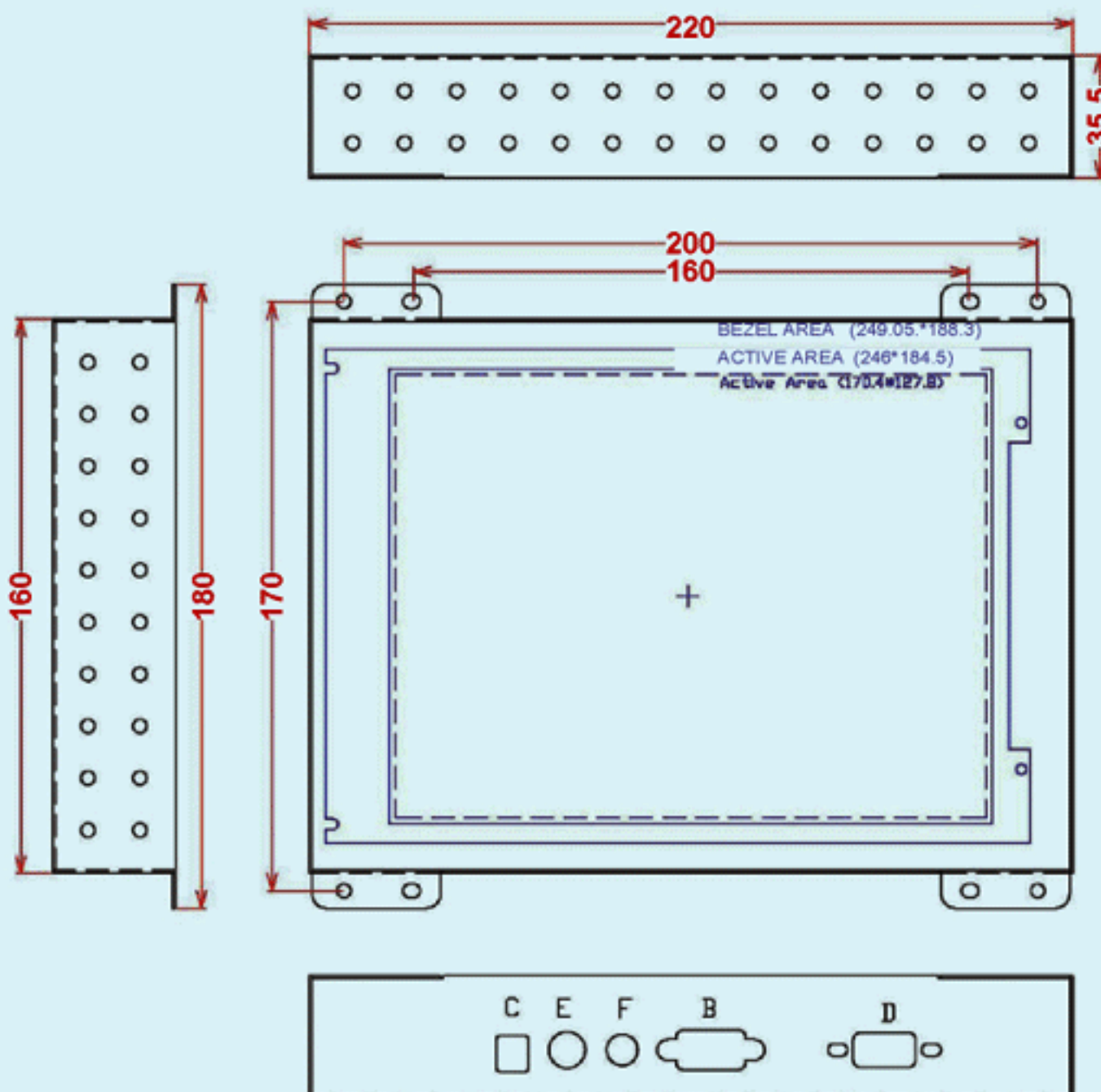


Picture is for reference

1. High Contrast color TFT LCD Display support resolution up to SVGA.
2. Power management system conforms to VESA DPMS and EPA Energy Star Standards.
3. Full consideration for touch screen installation and application.
4. Universal Power adapter.
5. Support DDC1&DDC2B for Plug & Play compatibility.
6. Advanced OSD control for picture quality adjustment..
7. Detachable stand for wall-mounting application.
8. Heavy duty Monitor with steel frame.
9. Custom design by request.

## ↳ Mechanical Drawing

- A. OSD Control
- B. VGA signal input
- C. DC power input (+12V)
- D. Touch screen connect
- E. S-Video signal input (option)
- F. Video signal input (option)



# Open Frame

## OF084-AUSN03

Model Name	OF084-AUSN03
Panel Type	AUOG084SN03 8.4-inch LCD Panel
Active Display Area (mm)	170.4 (H) x 127.8 (V)
Pixel Pitch (mm)	0.213 (H) x 0.213 (V)
Number of Pixels	800 x 600
Contrast Ratio	500 : 1
Display color	262,144 colors
Brightness (cd/m <sup>2</sup> )	220 cd/m <sup>2</sup>
Backlight	2 CCFL Backlight unit
View Angle (CR>=10)	-60 ~ +60 (H) ; -40 ~ +60 (V)
Optical Rise Time / Fall Time	50 ms
Synchronization Range	31.5 ~ 68 KHz / 56 ~ 75 Hz
Horizontal / Vertical	
Recommended Resolution	800 x 600 @ 60Hz, 75Hz
Signal Connector	15 pin D-Sub
Front Control	Power ON / OFF with LED, Menu & Select / Up & value decrease Auto Adjust / Down / value increase / Source
OSD	Volume, Brightness, Contrast, Color-RGB, Auto Tune, H-Position, V-Position, Center, Frequency, Phase, Track, Text, / Graphics, Language, Recall, Save, Saturation, Hue,
Power Adapter	Universal AC 100V ~ 240V, 50 ~ 60Hz Input DC 12V, 4.0A Output, 48Watt MAX
Power Consumption	28 Watt Typical, Normal operation
Power Management	VESA DPMS Compliant
Plug & Play	Support DDC1&DDC2B for Plug & Play compatibility
Option Touch	Resistive ; Capacitive
Video Input	Option