



## **Feature:**

- *High Contrast color TFT LCD Display support resolution up to SXGA.*
- *Power management system conforms to VESA DPMS and EPA Energy Star Standards.*
- *Full consideration for touch screen installation and application.*
- *Universal Power adapter.*
- *Support DDC1&DDC2B for Plug & Play compatibility.*
- *Advanced OSD control for picture quality adjustment..*
- *Detachable stand for wall-mounting application.*
- *Heavy duty Monitor with steel frame.*
- *Custom design by request.*

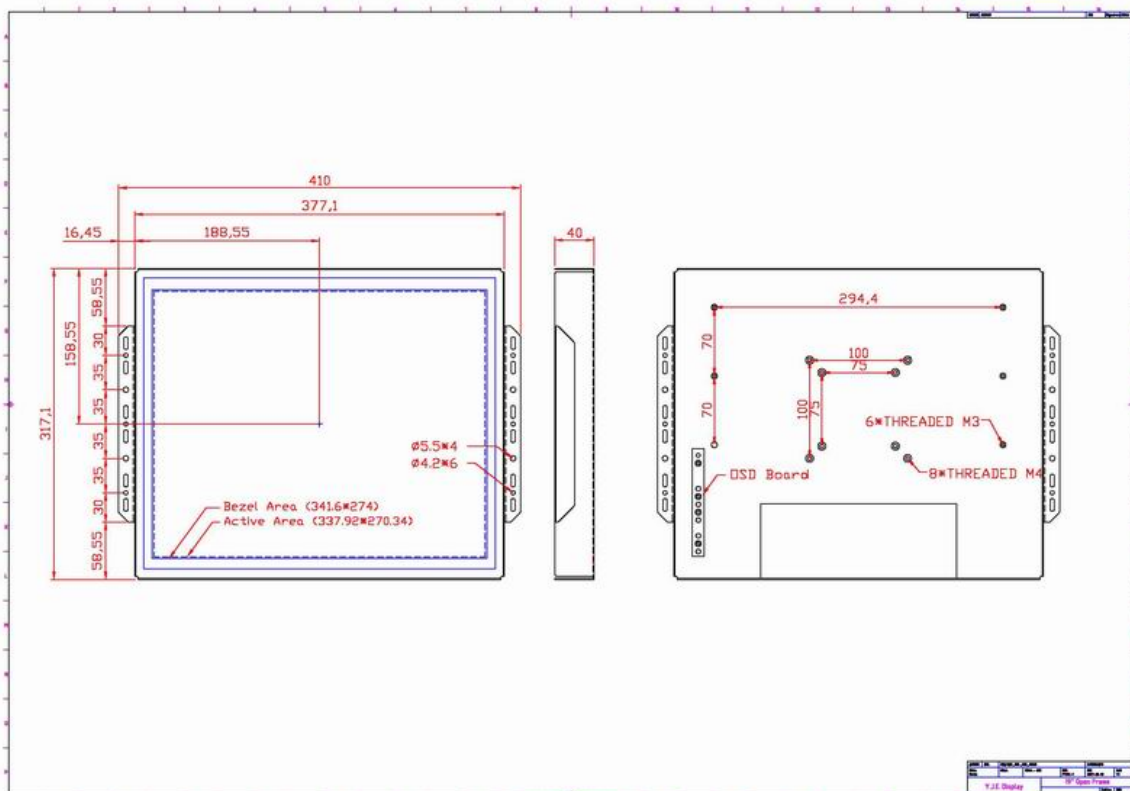
**Open Frame LCD Monitor  
YJE-O170-XXX Series**

## Product Specification

<b>Model Name</b>	<b>YJE-O170-XXX</b>
Panel Type	AU 17-inch LCD Panel
Active Display Area (mm)	337.920 (H) x 270.336 (V)
Pixel Pitch (mm)	0.264 (H) x 0.264 (V)
Number of Pixels	1280 x 1024
Contrast Ratio	450 : 1
Display Color	16.2M colors
Brightness (cd/m <sup>2</sup> )	260 cd/m <sup>2</sup>
Backlight	4 CCFL Backlight unit
Viewing Angle (CR $\geq$ 10)	-70 ~ +70 (H) ; -70 ~ +70 (V)
Optical Rise Time / Fall Time	16 ms
Synchronization Range Horizontal / Vertical	31.5 ~ 68 KHz / 56 ~ 75 Hz
Recommended Resolution	1280 x 1024 @ 60Hz, 75Hz
Signal Connector	15 pin D-Sub
Front Control	Power ON / OFF with LED, Menu & Select / Up & value decrease Auto Adjust / Down / value increase / Source
OSD	Volume, Brightness, Contrast, Color-RGB, Auto Tune, H-Position, V-Position, Center, Frequency, Phase, Track, Text, / Graphics, Language, Recall, Save, Saturation, Hue,
Power Adapter	Universal AC 100V ~ 240V, 50 ~ 60Hz Input DC 12V, 4.0A Output, 48Watt MAX
Power Consumption	30 Watt Typical, Normal operation
Power Management	VESA DPMS Compliant
Plug & Play	Support DDC1&DDC2B for Plug & Play compatibility
Option Touch	Resistive ; Capacitive
Video Input	Option

*\*Specification is subject to change without notice\**

## Mechanical Drawing



## Ordering Information:

YJE-O170-XXX ( ABC )

A : 0 ( Without stand ) ; 1 ( with stand ) 2 ( With Wall mount )

B : 0 ( Stander ) ; 1 ( With Touch (USB) ) ; 2 ( With Touch (RS-232) ) ; 3 ( With protective lens )

C : 0 ( VGA Only with Audio ) ; 1 ( with Video input ) 2 ( With Media player kits )

**We do what your need.....**